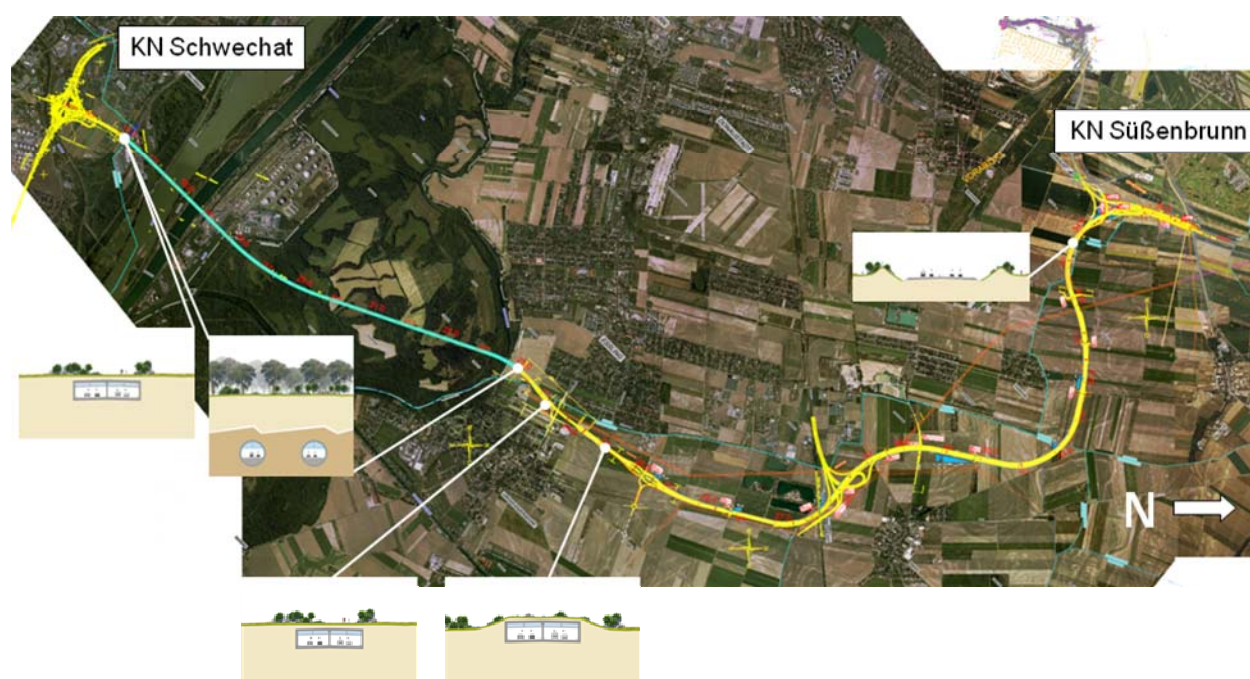


Project	Tunnel Donau – Lobau S1 Wiener Außenring Expressway
Client	ASFINAG Construction Management Corporation
Consulting services	2004-2010 project management, preliminary design, approval planning
Total cost	US\$ 1,9 Bn
Technical data	Total section length: 18.8 km Tunnel Donau-Lobau: 7.780 m TBM shield: Ø 15.0 m



Description	<p>The S1 Wiener Außenring Expressway is required as well as to form a high-ranked bypass and to reduce the traffic on the road network in the north-eastern area of Vienna. The Expressway S1 starts at the A4 motorway interchange in Schwechat and underpasses the nature protection area "Mannswörth Au", the Danube, the New Danube and the National Park "Donau-Auen".</p> <p>The tunnel will be constructed with TBM (first part with hydro shield and modus change to EPB in the second part) and will feature two separate twin tubes and emergency lanes. North of the National Park the tunnel is being built in cut and cover.</p> <p>The whole tunnel is equipped with continuous side-strips, niches are placed in elevated side-strips. Both tunnel tubes are provided with a total of 18 cross passages for pedestrians and 5 cross passages useable for vehicles.</p>
--------------------	--